

Commander Supervisor



Unlock your information's potential,
Find and work with specific titles,
Easily manage your server volume,
All in one, simple to use tool.



I N F O R M A T I O N M A N A G E M E N T



The DiscTag Enabled Workflow is designed around complete information automation. Products from many vendors, including DCA, allowing for the DiscTag XML metadata to populate the user interfaces of the applications, and, of course, each application adds its' specific report to the metadata.

DCA's Commander Supervisor unlocks the potential of XML metadata by providing a tool that search & retrieve title histories, import & export metadata between locations, setup rule-based automatic archives, and allow plant managers to set expiration dates for old versions of titles.

At its' core, Supervisor is actually two separate applications. The first is the Commander Index Server that resides on your DiscTag metadata store and serves as an automatically updating index of all your plant's metadata. The second is the Supervisor Client, which can reside on any Windows XP/Vista computer that has access to your metadata store.

The Supervisor client allows for two modes of use; either Administrator or User mode. Only Administrators are granted permission to change Archive settings or Delete titles.

Within the Supervisor client, operators can choose from several views and operations, including:

Metadata Search

- Search parameters can be easily customized to allow searching any of the tags within the XML metadata, including Customer ID, Catalog ID, Cut Number, Last Job Completed, # of Errors, Operator Name, LBR Type and more.
- Administrators can setup specific search parameters for custom additions to the metadata by using standard XPATH commands.
- An easy to use keyword search is also available for quick retrieval of exactly what you are looking for.

Title/Server View

- If you would rather view all titles on your Mastering Server or all the title reports on your Metadata Store, you can use the Title/Server View, which provides a list of everything on your server, overlaid with the metadata Catalog ID/Customer information, making it easy to find that one image you are looking for on a 50TB server.
- The server view also allows you to view any metadata about the titles or reports on your server, so you can sort a list by specific parameters.

Report View

- Setting any image or report as your 'Current Title' allows you to view or print the complete XML metadata history for that title.

Expiration

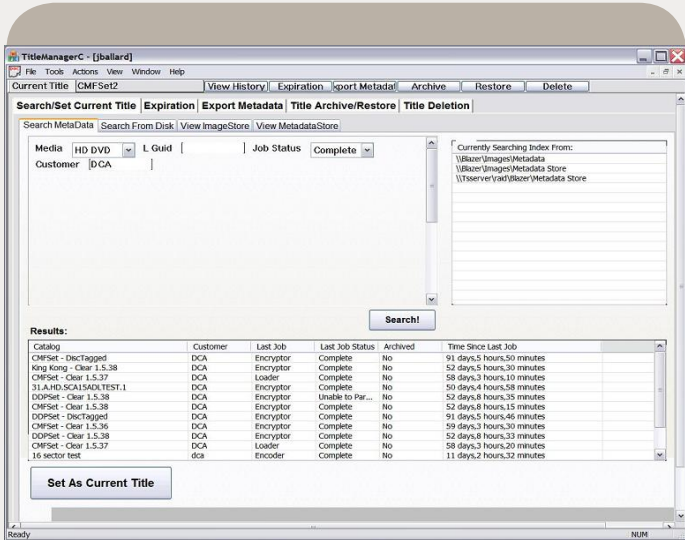
- Administrators have the option to use metadata to prevent mastering or verification from occurring on specific images on their network. This allows you to ensure that older versions of a title never pass QC, thus reducing the chance of shipping the wrong version of a title.

Metadata Sync

- Users can export metadata to a local path or send metadata to be backed up using DCA's Viper Archiver system, which can archive the metadata onto physical media, such as DLT Tape, DVD-R, BD-R or UDO-DMD.
- Supervisor makes it easy to select the export of single title or multiple title metadata, giving you an easy way to backup your entire metadata store.
- Importing or restoring metadata is also possible, including the option to merge new jobs into an existing title (for sites which may offload)
- An optional module allows you to sync metadata between different physical locations

Archive/Restore Titles (requires Commander Archiver)

- Users can set rules for automatic archiving of old images based upon metadata criteria, including complex criteria, such as '30 days after successful verification of a replica'.
- An option exists to delete the image upon a successful archive.
- Titles still online can also be restored & rescheduled for Loading & Mastering directly from the Supervisor interface. Restored titles automatically validate against their HCRC values to ensure image integrity.
- Operators can print a copy of the Commander Archiver label for offline titles, allowing for a 'pick ticket' to be printed for easy retrieval of the physical media.



Commander Supervisor unlocks the potential of your production information with a flexible & powerful search tool, providing you the ability to quickly & easily find the exact information you were looking for, plus take the immediate action necessary on a specific title, all without ever touching a single piece of paper.

Also Available for Plant Management:

Commander Scheduler- provides complete automation for image transfer, mastering, verification and archival jobs from one interface.

Scheduler can provide automatic scheduling, which uses load-balancing and user-defined rules to automatically assign incoming images to systems based on the current production load, compatibility of the image type and priority of the job. Scheduler can also receive jobs automatically from ERP systems, such as SAP & J.D. Edwards, providing a seamless handoff from the front-end of the plant to the manufacturing operations

Commander Trends- automatically assimilates DiscTag metadata to provide daily reports on the health of your plant. These reports can be sorted by LBR, replication line or format type and are customizable using parameters from any tester, mastering or replication line available in the metadata.

Commander Archiver- is a complete standalone product that integrates with world-class robotic burners from Rimage. It includes a manual user interface and an automatic 'black-box' operating mode. Archiver also includes a complete label creation and editing application.



Contact Us

For more information on Commander Supervisor contact your DCA Account Manager

Americas & Asia

Eric Carson, Product Mgr
eric@dcainc.com
T:918.225.0346 x1054
F:918.225.1113
www.dcainc.com

Europe & India

Chris Vangramberen
chrisv@dcainc.com
T:+49.6021.45900.0
F:+49.6021.45900.29

Japan

Nozomu Hayatsu
nozomu@dcainc.com
T:+81.3.3402.5631
F:+81.3.3402.5615